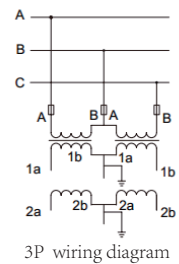
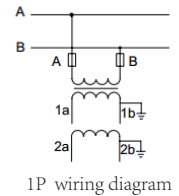
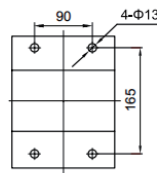
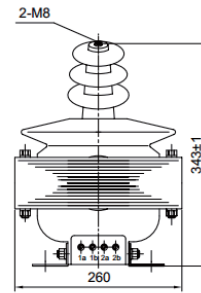
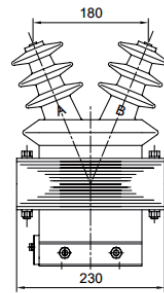


GFJDZ0929-10

Voltage transformer



Parameters

Technical parameters

Standards	IEC60044; IEC 61869; ANSI/IEEE C57.13
Rated Voltage	10KV, 6KV
Rated load	≤25VA
Rated frequency	50Hz or 60Hz
Cosφ	0.8 (lag)
Phase number	Single
Rated insulation level	12/42/75KV, 7.2/32/60KV
Class of pollution	II

Mechanical parameters

Material	Epoxy resin
Weight (kg)	28

Operating conditions	
Operating temperature	-25°C to +55°C
Daily average temp	<+40°C
Storage temperature	-40°C to +70°C
Altitude	<1000 meters
Condition	No existence of severely begrimed, erosive and radioactive gas in the air. Permission of long-term operation under rated current.

Selection guide

Model	Rated Voltage Ratio(KV)	Accuracy class combination	Rated Output (VA)	Limiting Thermal Output(VA)
GFJDZ0929-10	10/0.1/0.1	0.2/0.2	20/20	400
		0.2/0.5	20/20	
GFJDZ0929-6	6/0.1/0.1	0.5/0.5	25/25	